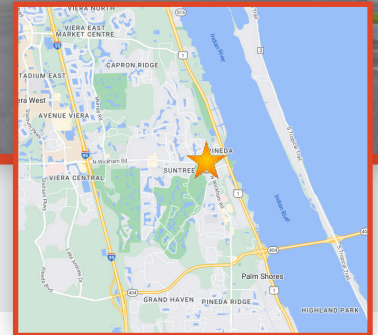




8240 Devereux Dr., 103B
 Melbourne, FL 32940
 407-848-1663
V3CommercialAdvisors.com

FOR LEASE
\$28.00/SF/YR NNN



2 SUNTREE PLACE, MELBOURNE, FL 32940
MEDICAL/OFFICE SPACE - NEW CONSTRUCTION

PROPERTY HIGHLIGHTS

Suite 101: 1,912 SF | Suite 102: 1,912 SF | Contiguous: 3,825 SF
 Shell space ready for your custom build-out

- Professional Office Space in a beautiful new construction office building
- Perfect for Medical and Professional offices
- In the heart of Suntree adjacent to Suntree Country Club with an exclusive park-like setting
- Easy access to Wickham Road at Suntree Blvd.
- Close proximity to US-1, Beachside, I-95, Melbourne International Airport, and just a short drive to Orlando

DEMOGRAPHICS

	1 MILE	3 MILES	5 MILES
Population	5,279	32,227	76,472
Median Age	55.7	51.8	49.8
Avg. HH Income	\$96,864	\$111,784	\$106,760

For More Information:

Charine Lewis
 321-508-9030
Charine@v3capital.com

Chad Cabrera
 321-960-3249
Chad@v3capital.com

The information contained herein has been given to us by the owner of the property or other sources we deem reliable. We have no reason to doubt its accuracy, but we do not guarantee it. All information should be verified prior to leasing.



496 S. Hunt Club Blvd.
 Apopka, FL 32703
 407-848-1663
V3Capital.com



FOR LEASE
\$28.00/SF/YR NNN

2 SUNTREE PLACE, MELBOURNE, FL 32940

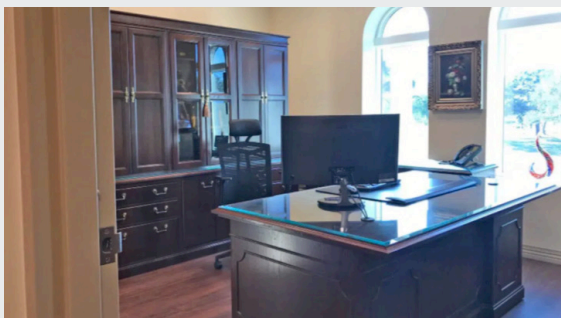
MEDICAL/OFFICE SPACE - NEW CONSTRUCTION

For More Information:

Charine Lewis
321-508-9030
Charine@v3capital.com



EXAMPLE OF FINISHED SUITE



The information contained herein has been given to us by the owner of the property or other sources we deem reliable. We have no reason to doubt its accuracy, but we do not guarantee it. All information should be verified prior to leasing.



496 S. Hunt Club Blvd.
Apopka, FL 32703
407-848-1663
V3Capital.com