



1384 HERITAGE ACRES BLVD., ROCKLEDGE, FL 32955
ROCKLEDGE OFFICE BUILDING

PROPERTY HIGHLIGHTS

- Suite A - 1,109 SF
 - Recently renovated!
- Four-unit office building with two-story loft-type suites
 - Ample parking
 - Conveniently located in a quiet setting
 - Just off the main N/S arterial of Fiske Blvd. close to I-95

DEMOGRAPHICS

	1 MILE	3 MILE	5 MILE
Population	9,238	38,339	87,581
Households	3,726	15,748	36,508
Median HH Income	\$81,323	\$77,629	\$69,037

FOR MORE INFORMATION

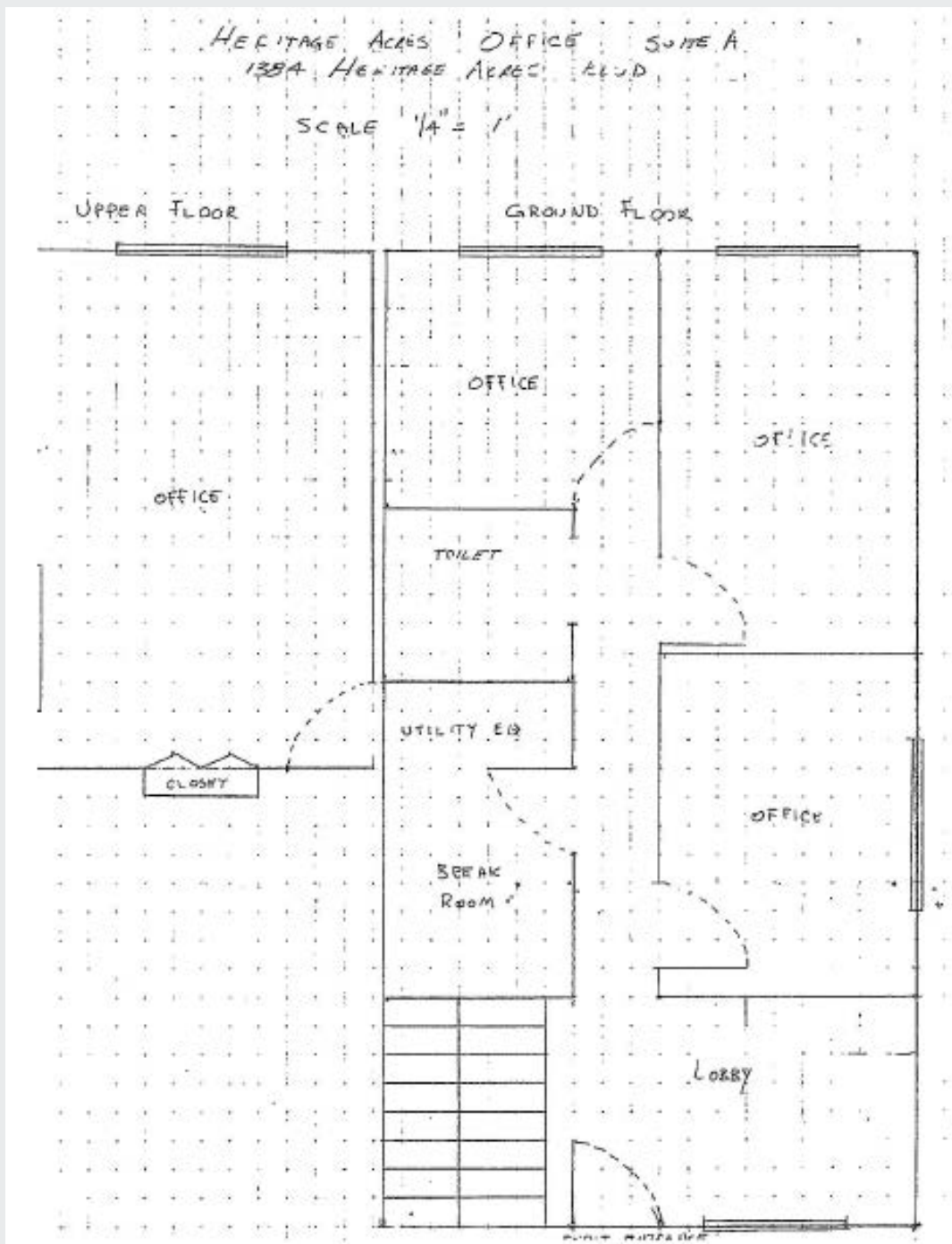
Joe Poirier
 321-537-7996
 Joe@v3capital.com



FOR LEASE
\$14.50/SF MG

1384 HERITAGE ACRES BLVD., ROCKLEDGE, FL 32955
ROCKLEDGE OFFICE BUILDING

Joe Poirier
321-537-7996
Joe@v3capital.com



www.v3commercialadvisors.com

The information contained herein has been given to us by the owner of the property or other sources we deem reliable. We have no reason to doubt its accuracy, but we do not guarantee it. All information should be verified prior to leasing.



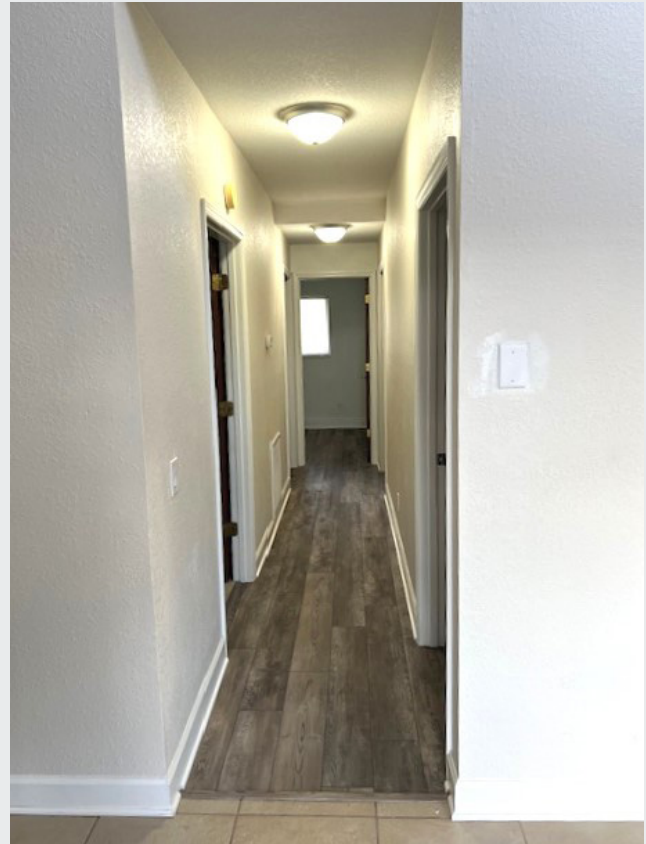
496 S. Hunt Club Blvd.
Apopka, FL 32703
407-848-1663
V3Capital.com



FOR LEASE
\$14.50/SF MG

1384 HERITAGE ACRES BLVD., ROCKLEDGE, FL 32955
ROCKLEDGE OFFICE BUILDING

Joe Poirier
321-537-7996
Joe@v3capital.com



www.v3commercialadvisors.com

The information contained herein has been given to us by the owner of the property or other sources we deem reliable. We have no reason to doubt its accuracy, but we do not guarantee it. All information should be verified prior to leasing.



496 S. Hunt Club Blvd.
Apopka, FL 32703
407-848-1663
V3Capital.com



FOR LEASE
\$14.50/SF MG

1384 HERITAGE ACRES BLVD., ROCKLEDGE, FL 32955
ROCKLEDGE OFFICE BUILDING

Joe Poirier
321-537-7996
Joe@v3capital.com



www.v3commercialadvisors.com

The information contained herein has been given to us by the owner of the property or other sources we deem reliable. We have no reason to doubt its accuracy, but we do not guarantee it. All information should be verified prior to leasing.



496 S. Hunt Club Blvd.
Apopka, FL 32703
407-848-1663
V3Capital.com